

ARBORESSENCE NEWSLETTER - 2020 SPRING

A close-up photograph of a tree branch. The branch is brown and textured. There are several clusters of small, light green flowers with many stamens. A large, bright green leaf is visible in the upper left corner. The background is a soft-focus green.

# ISA - UTAH

UTAH COMMUNITY FOREST COUNCIL

*The International Society of Arboriculture-Utah Chapter / Utah Community Forest Council is a non-profit organization that advocates for proper management and care of Utah's community forests through partnerships and public and professional education.*

## ISA/UCFC MEMBERSHIP RATES

Both memberships can be paid Online at <http://www.isa-arbor.com> or at <http://www.utahurbanforest.org>. See last page of arboressence.

UCFC/ISA Membership  
Individual – \$55 - ISA – \$135  
Student – free - ISA Student– free  
Lifetime – \$500  
Corporate – \$1,000

The International Society of Arboriculture (ISA) and UCFC memberships now renew one year from the day the membership starts. Contact Lisa Hanussak for more information.  
[lisa@utahurbanforest.org](mailto:lisa@utahurbanforest.org)

## CONTENT DISCLAIMER:

*This newsletter is a collaboration – not a peer-reviewed journal. We make no representations as to accuracy, completeness, correctness, suitability, or validity of any information on this site and will not be liable for any errors, omissions, or delays in this information or any losses injuries, or damages arising from its display or use. All information is provided on an as-is basis. It is the reader's responsibility to verify their own facts.*

*The views and opinions expressed in this newsletter are those of the authors and do not necessarily reflect the official policy or position of the ISA or Utah Community Forest Council. Assumptions made are not reflective of the position of any entity other than the author(s) – and, since we are critically-thinking human beings, these views are always subject to change, revision, and rethinking at any time.*



Cover photo of *Morus alba* flowers.  
By R. Broadbent

## SUBMISSION GUIDELINES

### PHOTOS AND PRINT COPY

Submit articles, info, ads and high quality digital photos or photos to [arboressence.editor@gmail.com](mailto:arboressence.editor@gmail.com)

### ARTICLES

We accept articles of general interest to arborists and green industry professionals.

### PHOTOGRAPHS

Submit electronic copies of original photos or include written permission from copyright owners. We use photos all facets of trees or tree care. Include name, address, phone number and a description with each submission.

EDITOR: Rachel Broadbent  
[arboressence.editor@gmail.com](mailto:arboressence.editor@gmail.com)

### ADVERTISING RATES

FULL PAGE AD \$200  
Size approximately 6.25"X 9"  
Verticle Orientation

HALF PAGE AD \$120  
Size approximately 3"X 9"  
Vertical Orientation OR  
6.25"X4.5" Horizontal Orientation

QUARTER PAGE AD \$85  
Size approximately 3"X 4.45"  
Vertical Orientation

Discounts available - 10% discount for placing ad in four consecutive issues.

Contact:  
[arboressence.editor@gmail.com](mailto:arboressence.editor@gmail.com)  
or [Lisa@utahurbanforest.org](mailto:Lisa@utahurbanforest.org)

# CONTRIBUTORS

Shirl McMayon has a BS in Ornamental Horticulture and has been a certified arborist since 1996. She is very active within the green industry, having served several years on the UCFC board, 4 years as Board President for Southern Nevada Arborist Group, advisory committee member for Desert Green Education Foundation, Utah Chapter liaison to the TREE Fund and an active cyclist riding to support both the TREE Fund and the Britton Fund.



Ty Nielsen is West Jordan City's Urban Forester and UCFC's President (as well as a Past President). He is passionate about trees.



Bruce Sherman is a local Utah poet working on a collection of poems entitled, *A Potpourri of Poetry*. Check one out on page 11.



Kristopher Watson was born and raised in Utah, he started as a seasonal insect trapper helping to monitor invasive insect species in 2000. His hard work and dedication plays an intricate role in protecting Utah from invasive insects such as Japanese beetle and gypsy moth. Currently Kristopher manages the Nursery program, Phyto program, Insect programs



and is the State Entomologist for the Utah Department of Agriculture and Food where he is challenged by agriculture pest and invasive species introduction on a regular basis.

# CONTENTS

Letter from the President . . . . .	2
The Green Menace is EAB by Kris Watson . . . . .	4
Emeral Ash Borer Quiz and Rack Card . . . . .	5
Covid-19 and the Tree & Landscape Industry by Shirl McMayon . . . . .	8
Climbing Trees, a poem by Bruce Sherman . . . . .	11
2020 Utah Tree Climbing Competition application . . . . .	13
2020 UTCC sponsorship opportunities . . . . .	15
2020 UTCC ArborMaster Climbing Kit Prize Package . . . . .	17
2019 Tree City USA by Jeran Farley . . . . .	18
TOUR DES TREES- In Colorado 2020 . . . . .	19
2020 UTCC Poster (cut it out and hang it up) . . . . .	21
UCFC Membership . . . . .	23

# PRESIDENT'S LETTER

BY TY NIELSEN

Hello fellow tree enthusiast, have you ever wondered what a tree has to go through in the early years of its life? I think that what's happening to us right now, is similar. I don't know how we can talk about anything today, except for how this time is so historic. There's talk of conspiracy, there's talk of pandemics, it is so hard to know what is correct and what is not.

There was much discussion amongst the executive committee as to whether we should cancel, or just postpone classes and meetings. This it was not an easy decision. I hope that this little note finds you well and employed.

Myself I did make it through a layoff. Traditionally working for a government gives you a certain amount of security. Early on it was the definition of what is essential and what is not. What's the service that you provide that the community can do without. I work in the parks department and all the parks are closed down. I was quite concerned that there was no need for me to be here. This is also the time when the UCFC/ISA- UT chapter has been in the process of rebuilding our website. This is also the planning of the UTCC. We had it all lined up for Liberty Park. A beautiful venue but unfortunately with all that is going on we had to cancel that one. We postponed it until September. It will be held back down in Payson. This is the same place we had it last year which was a very nice venue.

I'm still not quite sure what to think of what is going on in our world. And I say world, because we are so connected with social media. I have friends in Australia that have the same crazy ridiculous situations as we do here in Utah. It's just mind-boggling and I don't know quite what to think or say or do.

It's been good to see that do utility arborist were able to establish that yes, they are essential, which also led down to us as city workers that our work was essential also. Although, with the last layoffs cutting our park staff in half I am going back to doing part maintenance in addition to my urban forestry responsibilities. But I'm grateful for the paycheck that comes.

So this is one of those times where we just have to Roll with the punches and ride the tide, and be grateful that we can still take care of our families. One of the things that I hope that we learn from this when we recover from this, is that there won't be so many people feeling entitled and that cannot be satisfied.

I don't want to have to go through what my parents had to during the world wars. I'm hoping that the grateful waste not, want not, attitude can be spread to those of us alive right now. I imagine that if we were to put ourselves in the shoes of a tree this is probably the time where we've had a root pruning and uprooting transportation to another state and we're probably sitting in the holding yard waiting to figure out where we're going to land in the landscape and hope that we survive the transplant.

Ty Nielsen  
President ISA/UCFC

*The views and opinions expressed in this newsletter are those of the authors and do not necessarily reflect the official policy or position of the ISA or Utah Community Forest Council.*



---

*Other than the climbers, the most important component of a successful Utah Tree Climbing Championship is the judges and volunteers. The event requires 45-55 judges and volunteers to make it successful. To be a judge or volunteer, please call 801-446-8229 or email [Lisa@UtahUrbanForest.org](mailto:Lisa@UtahUrbanForest.org)*

*Rain or shine! September 17 -19, 2020*

*Memorial Park - 300 South Main Street - Payson, UT 84651*

# THE GREEN MENACE IS NOT A NEW COMIC BOOK CHARACTER



BY KRISTOPHER WATSON - STATE ENTOMOLOGIST

Greetings, I hope by now the emerald ash borer (EAB) is a common topic in your practice and future planning. Popularly known as “The Green Menace” EAB has lived up to its nickname by decimating all species of ash trees *Fraxinus* in the U.S. since its first detection in Michigan in 2002. Although small (1/2 inch in size), it should not be underestimated. EAB has killed tens of millions of ash trees and been detected in 35 states. With it moving across other states quickly, UDAF is taking action to exclude the pest from the state and plans to suppress or eradicate the population, if possible, once it arrives. However, with 15- 20 percent of all Utah urban forest being ash, we can only do so much to help our city planners and municipalities if it ever becomes established.

To prevent future damage or cost, UDAF strongly encourages all cities to remove ash from their planting list. While many cities have done this already, we continue to encourage others to do the same for future generations that will live with the decisions made today. It’s not a matter of if EAB gets here, but when it gets here. Therefore, any ash tree planted today becomes a potential liability for tomorrow.

In recent years, the UDAF Insect Program has been preparing for EAB introduction by forming a task force of partner agencies and groups, including USDA-Animal Plant Health Inspection Service (APHIS), USDA Forest Service, Utah State University (USU) Pest Diagnostics Laboratory, Utah Department of Natural Resources (DNR), Tree Utah and city arborists. This coalition has embarked on a multifaceted campaign to prevent introduction and facilitate early detection. Efforts include educating the public about the dangers of moving firewood, outreach to local tree care professionals on EAB identification and active surveying for this pest. In areas of the state deemed high-risk for introduction, state, federal and local officials have been involved in trapping, visual surveys and caged rearing of ash limbs which are suspected to be infested. UDAF has also implemented a firewood quarantine (R68-23) regulating the movement of all firewood into the state.

While many states and the federal government are giving up, Utah is putting up a fight to prevent the pest from getting here in the first place. We know these pests don’t move fast on their own and regulatory efforts can prevent or slow introduction. APHIS has proposed to remove the domestic quarantine regulation, despite its success in protecting most Western states from getting EAB so far. Nonetheless, it won’t be long now before the federal quarantine is lifted.

As a result of APHIS’s plans, UDAF is reviewing and may propose a state quarantine regulating all ash species from entering the state without strict regulatory guidance. With these additional measures we hope to have removed the two main pathways for this pest: Firewood and infested ash nursery stock.

In 2019 the UDAF Insect Program and task force partners coordinated the placement of 51 EAB traps in Beaver, Cache, Emery, Grand, Iron, Salt Lake, Utah and Weber counties. Trap site placement was prioritized for high-risk areas such as: places that were likely to have out-of-state firewood introduced, vicinities where trees have been reported as potentially infested by arborists or homeowners and neighborhoods identified as having numerous ash trees in decline. In 2020 the UDAF Insect Program will continue coordinating task force efforts such as trapping, visual survey and education. The UDAF Insect Program and others have also responded to dozens of EAB infestation claims by homeowners and landscape managers. EAB has not been detected in the state by trapping, visual survey, destructive sampling or caged rearing as of May 2020.

Nevertheless we need your help to keep EAB out of Utah. If you encounter a tree that appears to have EAB, contact UDAF immediately. Your help is critical, as early detection and rapid response is our best defense from allowing establishment or spread of this devastating pest.

[ag.utah.gov/farmers/plants-industry/](http://ag.utah.gov/farmers/plants-industry/)

# EAB QUIZ



Cut along the line and stick up somewhere

1) What is your current level of knowledge of Emerald Ash Borer?

1 = no knowledge; 5 = expertise

- A. 1
- B. 2
- C. 3
- D. 4
- E. 5

2) What type of insect is Emerald Ash Borer?

- A. Roundheaded borer (beetle)
- B. Clearwing moth borer
- C. Bark Beetle
- D. Flatheaded borer (beetle)
- E. Weevil (beetle)

3) There are insecticide treatments that can successfully protect trees from EAB?

- A. T
- B. F

4) Which insecticide will provide 2 years of protection against EAB?

- A. Imidacloprid
- B. Dinotefuran
- C. Emamectin Benzoate
- D. Azadirachtin
- E. Carbary

5) Which is the most common woodboring pest of ash trees in Utah?

- A. Emerald Ash Borer
- B. Red-headed Ash Borer
- C. Banded Ash Borer
- D. Lilac/Ash Borer
- E. Ash Bark Beetle

6) Ash trees (*Fraxinus*) should be removed from municipal/greenhouse/etc. planting lists

- A. T
- B. F

7) Emerald Ash Borer adults leave \_\_\_\_\_ shaped exit holes in bark after emerging.

- A. O-shaped
- B. Oval-shaped
- C. Square-shaped
- D. D-Shaped
- E. C-Shaped

\*Answers on the reverse side

## EMERALD ASH BORER

Help stop this insect PEST!

### THE CULPRIT:

**Emerald Ash Borer (EAB)** is an invasive insect that specializes on ash trees. EAB is native to parts of Asia and small areas of Russia. EAB was first discovered in the U.S. in 2002 in Michigan and is thought to have arrived via infested wood packing material. Since arriving in the U.S., EAB has been found in more than 20 mid-western and eastern states, killing tens of millions of ash trees.

***EAB is considered to be the most destructive forest insect to ever invade the United States, and will attack both healthy and unhealthy trees.***

### STATUS IN UTAH:

EAB was found in Colorado in September, 2013 and is now on Utah's front door. We have NOT encountered EAB in Utah, but this pest does pose a significant risk of introduction and establishment.

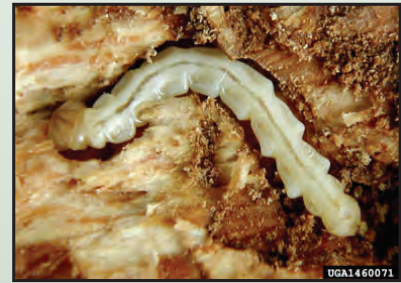
**EAB is a state quarantine pest. When EAB is found in an area, federal quarantines are enforced to prevent the movement of ash trees and ash products outside infested areas.**



The EAB adult is a small (~1/2 inch in length), metallic, green-colored beetle with a flattened body.



EAB adults have an iridescent copper red or purple abdomen hidden beneath their forewings.



A mature larva can reach a length of ~1 inch, has 10 abdominal segments, and is tapeworm-like in appearance.



Feeding larvae create S-shaped galleries underneath the bark.

Howard Russell, Michigan State University, bugwood.org

David Cappaert, Michigan State University, bugwood.org

David Cappaert, Michigan State University, bugwood.org

Edward Czarwinski, Ontario Ministry of Natural Resources, bugwood.org

## HOW DO I KNOW IF MY ASH TREE IS INFESTED?

EAB adults leave D-shaped exit holes (1/8-inch wide) when they emerge from tree trunks and branches in the spring. When the larvae chew the layers under the bark, they create S-shaped channels (see front page). Other signs and symptoms of EAB include thinning of the tree's canopy, new growth at the base of the tree or at the nooks of branches, bark splits, and increased woodpecker feeding/damage.

***If your ash trees show any of these signs, contact the Utah Department of Agriculture and Food or Utah State University's Plant Pest Diagnostic Lab as soon as possible.***



David Hermis, Ohio State University, budwood.org



Lori Spears, Utah State University

## IDENTIFYING ASH TREES

Ash trees are used extensively in residential and commercial landscapes and are found naturally in wood lots, along creek beds, and in low-lying wetlands. Some characteristics for identifying ash trees include opposite branching (branches and leaves are directly across from each other), compound leaves (a leaf composed of 5-11 leaflets), diamond-shaped bark, and oar-shaped seeds.



Keith Karnau, Maine Forest Service, bugwood.org



Paul Wray, Iowa State University, bugwood.org

## HELP STOP THE SPREAD OF EAB!

EAB is primarily spread by movement of infested wood from infested areas. You can help stop the spread of EAB by not transporting firewood and burning wood where you buy it. If you have ash trees in your yard, please check them periodically for signs of EAB.

## REPORT SUSPECTED SPECIMENS OR DAMAGE

Utah Department of Agriculture and Food  
(801) 538-7184  
Email Hotline: [utah-eab@utah.gov](mailto:utah-eab@utah.gov)

Utah State University's Plant Pest Diagnostic Lab  
(435) 797-2435  
[www.utahpests.usu.edu](http://www.utahpests.usu.edu)



Utah State University is an affirmative action/equal opportunity institution.

Answers to EAB quiz on previous page

- 1) All Answers are correct
- 2) D. Flatheaded borer (beetle)
- 3) T
- 4) C. Emamectin Benzoate
- 5) D. Lilac/Ash Borer
- 6) T (Do not plant North American ash species or their cultivars)
- 7) D-Shaped



NEBRASKA FOREST SERVICE

The Nebraska Forest Service has a great website page dedicated to the EAB. check it out if you want some more information, or to pass that information on to someone else.

[nfs.unl.edu/eab-faq](http://nfs.unl.edu/eab-faq)



Or if you want a good laugh, check out the awesomely informational and entertaining EAB video from The Denver Botanic Gardens.

<https://youtu.be/PdLgvl7kb2g>

# LEADER IN TRUNK INJECTION TECHNOLOGY



As Arborjet turns 20, we are very proud of the almost 4000 Service Provider partners who are as committed as we are to protecting our urban and natural forests. Together, we have saved millions of trees using our formulations and equipment. Thank you to the entire Arborjet family across the globe for helping us continue our mission to be leaders in environmental stewardship as we preserve the planet - one tree at a time!

[arborjet.com](http://arborjet.com)

TREE-age® R10 Insecticide is a Restricted Use Pesticide and must only be sold to and used by a state certified applicator or by persons under their direct supervision.

**ARBORJET**  
Revolutionary Plant Health Solutions

# COVID-19 AND THE TREE AND LANDSCAPE INDUSTRY

## WE ARE ESSENTIAL!

BY SHIRL MCMAYON

It took a worldwide pandemic to make us realize we are not all essential. And it's actually a painful designation for most of us to accept - you never expected to wake up and be deemed "nonessential". And as it should be - no one wants to believe their efforts and lifelong goals have no value when the world abruptly turns upside down. But we should remind ourselves and understand these are just words. And more importantly, these words and categorizations are temporary and are ultimately intended to be lifesaving - small consolation to those businesses deemed non-essential and shut down indefinitely. Fortunately, the landscape and tree industry dodged the nonessential bullet and our services were deemed essential. What does that mean? Basically, it means we continue our operations because the services we provide to our communities and clients continue to have value even as the country (the world) rolls out ever increasing and restrictive pandemic safety measures. How is your company dealing with the viral stress?

I have been an Account and Business Development Manager at Green Images (dba GTI) in Las Vegas since 2014. At full season operations, we have over 500 employees including our construction and maintenance crews, our managers and our back office staff (accounting, IT, payroll, human resources, etc.) When Nevada's shelter in place orders were issued, the GTI management team gathered to reformulate our daily operations plan. As an essential service, in order to continue working, we had to put in place a plan like we've never done before - including increased sanitation, social distancing, additional protective gear (disposable masks and gloves) and working from home. On March 12th, a letter went out from our owners to all staff addressing the COVID-19 pandemic and GTI ongoing operations. The letter addressed the virus' symptoms and what to do should symptoms develop; how the virus spreads; potential consequences of exposure (including death) and an attached brochure created by Siemens regarding



Coronavirus hygiene precautions - proper handwashing, proper wearing and disposing of mask, social distancing, avoiding touching the face - all of the new "norms" we hear over and over again. At that point it was "Keep Calm And Wash Your Hands".

Our in-house buyers immediately started purchasing hand sanitizer, surface disinfectants, gloves, masks, safety glasses - none in excessive amounts (as in hoarding) but in anticipation and preparation for our increased safety and hygiene

regimen. Next, our Safety Manager and his team developed a strategy to train the crews on the required sanitation and hygiene standards along with the importance of strict adherence to the new policies in order to keep not just themselves but our clients and general public protected. Trucks are limited to 2 people per cab (down from 3-4) and are sanitized at the end of each service day. Now deemed a work remote employee, I gave up my company truck for crew usage to allow for continued operations while social distancing - a 4-man crew now requires 2 vehicles in order to provide safe distancing. Hand-held equipment such as chainsaws, pruning saws, mowers, weedwhackers, etc. were to be assigned to only one user - no more sharing equipment (the crew eagerly embraced this concept).

Our main office was closed to the public and limited staff would be allowed to work in the office at one time. Our IT manager immediately got to work setting up as many office staff as possible to work remotely from home - not an easy task! But thanks to developing technology, meetings and communication were mostly uninterrupted and were conducted using phones, computers and laptops. Next we sent out an email to clients and a post on our Fa-

---

cebook page stating that all GTI operations (construction, tree care, maintenance and enhancement) would continue with no interruption in services. We also received a letter from NALP (National Association of Landscape Professionals) stating their efforts to secure and protect the green industry as an essential service. Their letter cited 3 concepts regarding the importance of green industry services: 1) protecting public safety related to emergencies such as storm damage and clean up; 2) keeping green spaces clean and green, potentially lessening crime and vandalism; 3) and my favorite, “boosting morale and mental health during a difficult time for our Nation”. They also reiterated the less apparent nature of our operations as it relates to social distancing: “because our industry functions outside, this greatly reduces the chances to come into contact with other individuals’.

On March 20, another letter from the owners at GTI went out to all employees to update and to address fear of getting sick and fear of losing their jobs - very real concerns for thousands of americans. Any employee not approved to work from home, but too scared or too sick to come to work, would be excused without question. GTI owners wanted to make it clear that continuing to work was an option, not mandatory. The company did not want sick or scared employees working for fear of losing their jobs. A direct quote from the email: “Unless there is a significant downturn in the economy resulting in a major loss of business, you will not be penalized in any manner for electing to stay home and your job will be here for you when this situation is over”.

As of the date of writing this article, April 21st, we still have no confirmed or reported cases of the virus within the company. We continue to send our crews out to the job sites. Fortunately, landscape and tree work is inherently a form of social distancing. Let’s face it - that’s why we do it! Most of our operations are far within the 6’ distancing rule; in fact, we very rarely work within 20’ of another employee or public, especially in maintenance where the plan is to roll into the jobsite, divide up the task, spread out, complete and move on - in other words, divide and conquer. We have assured our clients, particularly residential clients, that gloves and masks are mandatory for our employees and no shared surfaces at the residence (gate handles, door knobs, access code pads, light switches, etc.) would be touched without protective gloves. We’ve had a few clients reduce frequency of service (down from weekly to twice per month) and only one maintenance client discontinuing service until their operations resume (this is an outdoor water park - understandably out of commission for a bit). Our tree operations remain 100% in operation. Again, social distancing is not an issue at all when you work in trees!



As a side to this scary time, gardens, trees, parks and landscapes have become invaluable in their ability to calm people in stressful situations. We have learned one thing that will never change is the need for outdoor spaces and a natural environment. With most of our population stuck at home there are a lot more people taking advantage of the outdoors during the pandemic. Seeing empty shelves in the grocery store for the first time woke some sleepers up regarding how vulnerable we are when it comes to food - yet another silver lining for our landscape industry! Our company phones are ringing off the wall with requests for landscape services, especially for installation of vegetable beds. At GTI, we are grateful to be working, grateful to feel safe in our daily operations and especially grateful our industry is deemed essential! Stay safe, stay calm, stay healthy!



# DESIGNED FOR THE MULTITASKER

Day in and day out you face the challenges and the complexity of managing a productive, profitable and safe worksite.

With different size and power options, the Vermeer lineup of mini skid steers can answer your material handling needs while bringing benefits in operator comfort, safety, productivity and reliability.

Visit our website to learn more, [vermeerrockymountain.com](http://vermeerrockymountain.com).



BILLINGS, MT  
406.656.2939

BOISE, ID  
208.463.4573

SALT LAKE CITY, UT  
801.975.1216

SPOKANE, WA  
509.484.2441

---

# CLIMBING TREES

BY BRUCE SHERMAN

Lee was a boy who loved climbing trees ...  
It was his passion and he did it with ease.

There wasn't a tree located near Lee  
He hadn't climbed ...I guarantee.

He found maples and elms fine for a climb ...  
Other trees, too, were worth his time.

Apple trees and cherry trees ... he also ranked high  
'Cause he brought their fruit home, and his mom baked  
pies.

All he needed was a low branch to give him a start. ...  
As he went higher - others further apart.

As he got older, he climbed higher and higher ...  
He felt the freedom his passion would inspire.

Not far from Lee's home was a tree called "Old Pine" ...  
No one he knew ever tried to climb.

There was something special about that tree ...  
Not sure what it was that kinda scared Lee.

Through his kid's eyes it looked 1000 feet tall ...  
If you slipped near the top, you'd have one awful fall.

Well, the day finally came that he put fears aside ...  
Climbing Old Pine it was time that Lee tried.

On the low branches, everything went well ...  
Could he get to the top? ... too early to tell.

Lee almost fell once to his dismay ...  
But a big branch caught him after just a short way.

That shook Lee up ... he lost his breath ...  
He felt like he had cheated death!



But he kept on climbing ... more carefully ...  
As determined as anyone could possibly be.

Well ... you've probably guessed ...  
He got to the top and took a long rest.

Then Lee slowly climbed down ...  
Proud of what he had done.

He had faced a challenge ...  
And he had won!

When he finished the climb ... safely on the ground ...  
Lee hugged that tree ... with feelings profound.

As he looked back on those days in his mem'ry,  
He valued the time spent climbing that tree.

After reading this poem, I hope you'll agree,  
To turn off the TV and go climb a tree!

The old pine's long gone now ... a hospital where it stood.  
Lee recently turned 87 and is still feelin' pretty good.

One of his greatest pleasures is being able to see ...  
One of his grandkids climbing a tree!



# The Municipal Arborist's Consultant

When your projects include a Consulting Arborist or Registered Consulting Arborist® (RCA), you'll have the added expertise you need to ensure that you meet the needs of your community. Members of the American Society of Consulting Arborists (ASCA) can add an authoritative voice to your team regarding:

- Tree preservation
- Tree and plant inventories
- Hazard and risk assessment
- Tree and plant appraisal
- Report writing

To find a Consulting Arborist who can provide support in your community, visit "Find a Consulting Arborist" at [asca-consultants.org](https://asca-consultants.org) or call **(301) 947-0483**.



Interested in building your own consulting career? Here are a few ways to get started:

#### **Become an ASCA Member**

Visit [asca-consultants.org](https://asca-consultants.org) for a full list of benefits.

#### **Attend the 2020 ASCA Annual Conference**

December 2–5 • Loews Ventana Canyon Resort • Tucson, AZ  
Visit [asca-consultants.org/annualconference](https://asca-consultants.org/annualconference) for more details.

#### **Attend the 2021 ASCA Consulting Academy**

February 16–19 • Indianapolis Omni Severin Hotel • Indianapolis, IN

*ASCA programs qualify for ISA Continuing Education credits.*

**asca**  
AMERICAN SOCIETY of  
CONSULTING ARBORISTS

# 27<sup>th</sup> Annual Utah Tree Climbing Championship



Cut along the line



Photo courtesy of Val Bleazard

## September 17 -19, 2020

*Rain or shine!*

### Memorial Park 300 South Main Street Payson, UT 84651

### 3 CEUs for ISA Certified Arborists

**Directions to Memorial Park. Driving South on I-15:** Take Exit 250 toward Payson. Use the left two lanes to turn left onto UT-115 S/3200 W/Main Street. About a mile, the park will be on your left. **Driving North on I-15:** Take Exit 248; Turn right onto W 800 S; Turn left onto UT-198 E; Turn right onto W 400 S; Turn left onto Main Street; Park will be on your right.

#### Thursday, September 17, 2020

**Competitors are required to have their gear checked on Thursday evening anytime between 5-8pm at Memorial Park.** Competitors arriving for gear check without their gear check forms completed will not be allowed to climb. Complete your forms **BEFORE** coming.

Visit [www.isa-arbor.com](http://www.isa-arbor.com) for complete rules, scoring, and regulations.

**Registration is limited to 45 climbers.**

#### Friday, September 18, 2020

**Competitors are required to attend.**

**Arrive early, we will start promptly!**

**7:30 am** – Registration

**8:30 am** – Welcome

**9:00 am** – Event walk through and rule review

**10:30** – Competitors will compete in three of these events: Work Climb, Aerial Rescue, Belayed Speed Climb, Ascent Event, and Throw Line.

**Lunch provided for climbers & judges, but no break.**

*Times are subject to change.*

#### Saturday, September 19, 2020

**Arrive early, we will start promptly!**

**7:30 am** – Competitor Check-in

**8:00 am** – Competitors will compete in two of these events: Work Climb, Aerial Rescue, Belayed Speed Climb, Ascent Event, and Throw Line.

**Lunch provided for climbers & judges, but no break.**

**10:00 am** – Children’s Tree Climb

**11:00 am** – Preliminary Event

Awards

**11:30 am** – Drawing\*

**12:30 pm** – Master’s Challenge

**3:30 pm** – Master Challenge Awards

*Times are subject to change.*

#### Competitors must bring the following climbing equipment:

Boots and Hardhat with chin strap	Throw Ball and Line	Climbing Saddle and Rope
Double Locking Carabiners	Flip Line or Lanyard	Handsaw

#### PRIZES

Individual event winners receive \$100. The Master’s Challenge winner receives \$500 plus travel expenses to attend the **North America Tree Climb Championship (NATCC)** date/location TBD, a chainsaw from Stihl and climbing gear from Arbor Master; second place is \$500; third place is \$300; and fourth place \$200. The 2<sup>nd</sup> place winner can also compete at the NATCC.



To be a sponsor, please call  
801-446-8229

or email

[Lisa@UtahUrbanForest.org](mailto:Lisa@UtahUrbanForest.org)

Food will be available for spectators to purchase.

Vendors donate equipment to be used for drawings on Saturday including a chain saw, climbing hardware, and other equipment. Tickets will be sold at the event.

Climbers receive two T-shirts when fees are paid by August 7.

# 27<sup>th</sup> Annual Utah Tree Climbing Championship Registration Form

Both sides of this section must be completed by each competitor.



Cut along the line

- a. To win and represent the ISA-Utah Chapter, I have been a member in good standing of the Utah ISA Chapter since June 17, 2020, and live and work within 300 miles of Salt Lake City, Utah.
- b. I will attend the equipment check on Thursday, September 17, 2020 at Memorial Park. The equipment I bring to the equipment check will be used at the tree climbing event, is appropriate for tree climbing, and meets or exceeds minimum accepted industry safety standards.
- c. If I win the Master's Challenge, I will represent the Utah ISA Chapter and I am or will be an ISA member to compete at the NATCC event.
- d. My registration fee must be paid by August 7, 2020 to receive T-shirts. If payment is received after August 7, T-shirts are not guaranteed.  
T-shirt size: Small  Medium   
Large  XLarge  XXLarge

I have read and agree to these statements.

\_\_\_\_\_  
Climber Name

\_\_\_\_\_  
Date

**Registration must be received by August 7, 2020 to receive a short sleeve and long sleeve T-shirt. If received after August 7, T-shirts are not guaranteed.**

**Registration is limited to 45 climbers.**

Name \_\_\_\_\_

Company \_\_\_\_\_

Address \_\_\_\_\_  
\_\_\_\_\_  
\_\_\_\_\_

Email \_\_\_\_\_

Phone \_\_\_\_\_

### Registration Fees (please check one):

**Registration must be received by August 7, 2020**

#### Member of UCFC/ISA-UC:

- Competitor \$100 (Climb & CEU's)
- Non-Competitor \$75 (For CEU's only, must attend)

#### Non-Members:

- Competitor \$145 (Climb & CEU's)
- Non-Competitor \$120 (for CEUs only, must attend)

### Registration/Payment Options:

- Email form to [lisa@utahurbanforest.org](mailto:lisa@utahurbanforest.org)
- Payment by credit card – Print below or call Lisa at 801-446-8229
- Mail registration and check payable to UCFC. Mail to Lisa Hanussak, 2506 W Cherry Grove Way, South Jordan, UT 84095

VISA       MasterCard

Cardholder's Name \_\_\_\_\_

Card # \_\_\_\_\_

Exp Date \_\_\_\_/\_\_\_\_ Three #'s on back \_\_\_\_\_

Person Authorizing \_\_\_\_\_

Address and zip code of billing address for credit card:  
\_\_\_\_\_  
\_\_\_\_\_  
\_\_\_\_\_

# 2020 UTCC SPONSORSHIP LEVELS

Overall Event Sponsor: \$2,000 Cash donation (not in-kind)

1. 3' X 30' Event Sponsor Banner at the UTCC
2. Listing as event sponsor on all advertising and press releases
3. Sponsor Logo on all event T-Shirts
4. Vocal Recognition several times throughout event
5. Free entry for up to two climbers associated with company

Platinum Sponsorship: \$1,500 Cash and/ or In-kind donation

1. 30" X 60" Event Sponsor Banner at the UTCC
2. Listing as event sponsor on all advertising and press releases
3. Sponsor Logo on all event T-Shirts
4. Vocal Recognition several times throughout event
5. Free entry for up to two climbers associated with company

Gold Sponsorship: \$750.00 - \$1,000.00 Cash and/or In-kind donation

1. 30" X 60" Banner at Event (Preferably hung in a tree)
2. Sponsor Logo on all event T-Shirts
3. Vocal Recognition several times throughout event

Silver Sponsorship: \$500.00 Cash and/or In-kind donation

1. Full Individual Event Sponsor
2. 30" X 36" Banner at Individual Event
3. Sponsor Logo on all event T-Shirts
4. Vocal Recognition several times throughout event

Bronze Sponsorship: \$250.00 Cash and/or In-kind donation

1. Partial/Shared Individual Event Sponsor
2. 30" X 36" Partial/Shared Banner at Individual Event
3. Sponsor Logo on all event T-Shirts
4. Vocal Recognition several times throughout event

Master's Challenge Donors:

In-kind donations to all Master's Challenge participants and winner.

1. Recognition as sponsors/donors throughout the event.
2. Vocal Recognition several times throughout event



Other Sponsors:

Kid's Climb/Limb Walk Sponsor (In-kind personnel staff donation)

1. Sign proclaiming sponsorship
2. Sponsor Logo on all event T-Shirts
3. Vocal Recognition several times throughout event

Meal Sponsor (Breakfast Break Materials/ Lunch/Friday Dinner)

1. Sign proclaiming sponsorship
2. Sponsor Logo on all event T-Shirts
3. Vocal Recognition several times throughout event

Band Sponsor (Cover Cost of Live Band Friday evening)

1. Sign proclaiming sponsorship
2. Sponsor Logo on all event T-Shirts
3. Vocal Recognition several times throughout event

Event Vendor: \$175.00

Vendor is responsible for own set up (Tables/ Chairs, Tents, etc.)



## UTAH STATE UNIVERSITY Horticulture Degree: Bachelor of Science

### About This Degree

The Horticulture major is designed for students in USU's statewide campus system along the Wasatch Front. It is targeted to the field of ornamental horticulture and will prepare students for careers in **arboriculture**, nursery production, landscape management, greenhouse crop production, and related green industries. The curriculum is focused on the application of horticultural principles, including weed, insect, and disease control; soils; crop production; plant biology; and others. The degree is distinct from the Plant Science BS offered on the Logan campus by having less emphasis on the science of crop production.

### Locations

Available at regional campuses: Tooele, Kaysville, Orem, and Salt Lake

### Contact

Regional Campus Advisor: Jen Whitney at [jen.forest@usu.edu](mailto:jen.forest@usu.edu) or 435.797.4230



**PLANTS**  
(Field crops, fruit trees, etc.)



**SOIL**  
(Field, lawn, garden, etc.)



**WATER**  
(Irrigation, livestock, etc.)



[usual.usu.edu](http://usual.usu.edu)

(435) 797-2217

Utah State University is an affirmative action/equal opportunity institution.

---

# 2020 ARBORMASTER CLIMBING KIT PRIZE PACKAGE

The ISA-Utah Chapter is pleased to announce the 2020 ArborMaster Climbing Kit Prize Package for the Utah Tree Climbing Champion (UTCC).

This climbing kit is being offered to each chapter champion (both man and woman, if applicable)! The package is intended to help equip the chapter representative(s) for the International Tree Climbing Championship (ITCC) Competition.

## Each prize package includes:

- Buckingham's Tree Squeeze(TM) 2.0 and a ROPEPRO(TM) Deluxe Bag
- Silky's Sugoi Professional 330mm Hand Saw
- OREGON® 's Tool Bag
- Samson's ArborMaster 150' Hawkeye Climbing Line with eye splice
- ArborMaster® - 50% savings for a 2-Day or 3-Day Hands-On Training Module

## Sponsored by:



# 2019 TREE CITY USA

FROM JERAN FARLEY

## 83 Communities

American Fork  
Beaver  
Bluffdale  
Boulder  
Brian Head  
Brigham City  
Camp Williams  
Cedar City  
Cedar Hills  
Centerville  
Clearfield  
Coalville  
Delta  
Draper  
Eagle Mountain  
Enoch  
Ephraim  
Farmington  
Ferron  
Francis  
Grantsville  
Helper  
Herriman  
Highland  
Hill AFB  
Holladay  
Huntsville  
Hurricane  
Hyrum  
Kanab  
Kaysville  
La Verkin  
Leeds  
Lehi  
Lindon  
Logan  
Lynndyl  
Manti

Mapleton  
Marriott-Slaterville  
Moab  
Monticello  
Murray  
Nephi  
New Harmony  
Nibley  
North Logan  
North Ogden  
North Salt Lake  
Oakley  
Ogden  
Orem  
Panguitch  
Park City  
Parowan  
Pleasant Grove  
Price  
Provo  
Riverton  
Rockville  
Salt Lake City  
Sandy  
Santa Clara  
Saratoga Springs  
Smithfield  
South Jordan  
South Ogden  
South Salt Lake  
Spanish Fork  
Springdale  
Springville  
St George  
Toquerville  
Torrey  
Tremonton  
Virgin

Washington  
Wellsville  
West Bountiful  
West Haven  
West Jordan  
West Valley City  
Woods Cross

### Tree Campus USA 6 Campuses

Southern Utah University  
University of Utah  
Utah State University  
Utah Valley University  
Weber State University  
Westminster College

### Tree Line USA 4 Power Companies

Brigham City Public Power  
Murray City Power  
Provo City Power  
Rocky Mountain Power

TREE CITY USA®

# Rollin' Through The Rockies

WITH TOUR DES TREES®  
to Benefit TREE Fund®



Join us for 5 days and 300 miles  
of cycling in Colorado!

- Registration Dates: January 15 - June 15, 2020
- Ride Check-In: August 29, 2020
- Ride Dates: August 30 - September 3, 2020
- Closing Breakfast & Bike Shipping: September 4, 2020

See the route and register at:  
[treefund.org/tourdestrees](http://treefund.org/tourdestrees)

2020



Proceeds Benefit Tree Research and Education  
Endowment Fund (TREE Fund®), 552 S. Washington St.,  
Ste. 109, Naperville, IL 60540 • (630) 369-8300



# THE GREEN MENACE

- ALL ASH
- APHIS
- ASH
- BEETLE
- BORER
- DIEBACK
- DONT PLANT ASH
- D SHAPED EXIT HOLE
- EAB
- EMERALD
- FIREWOOD
- GALLERIES
- IMIDACLOPRID
- INJECTIONS
- LARVAE
- NURSERY STOCK
- QUARANTINE
- SPRAYS
- TRAPPING
- UDAF



**BENEFIT #13**

## NO HIDDEN FEES HERE

TreeKeeper’s easy 1, 3 or 5 year flat rate includes unlimited users and unlimited data points with free upgrades based on feedback from community forestry peers.



MAXIMIZE THE BENEFITS OF YOUR URBAN FOREST WITH TREEKEEPER SOFTWARE.

VISIT [TREEKEEPERSOFTWARE.COM](http://TREEKEEPERSOFTWARE.COM)

EMAIL US





Cut along the line and stick up somewhere

*Welcome to the*  
**UTAH**

INTERNATIONAL SOCIETY OF ARBORICULTURE - UTAH CHAPTER

**27TH ANNUAL  
TREE CLIMBING  
COMPETITION**

**FRI. SEP 18 & SAT. SEP 19**

**MEMORIAL PARK - PAYSON CITY**

**300 S. MAIN STREET**



ISA UTAH  
CHAPTER  
UTAH COMMUNITY  
FOREST COUNCIL

UTAH COMMUNITY FOREST COUNCIL

[WWW.UTAHURBANFOREST.ORG](http://WWW.UTAHURBANFOREST.ORG)



The International Society of Arboriculture-Utah Chapter / Utah Community Forest Council is a non-profit organization that advocates for proper management and care of Utah's community forests through partnerships and public and professional education

[www.utahurbanforest.org](http://www.utahurbanforest.org)



# WE ♥ TREES

MAKE TIME FOR TREES TODAY



Cut along the line and stick up somewhere



## Payment Options

Email registration form to [Lisa@UtahUrbanForest.org](mailto:Lisa@UtahUrbanForest.org)

**-Or-**

Payment options are mail in payment, call in payment, or pay with PO Number (invoice can be mailed or emailed to you).

**-Or-**

Mail registration to UCFC, c/o Lisa Hanussak, 2506 West Cherry Grove Way, South Jordan, Utah 84095

Make check payable to UCFC.

If paying with VISA or MasterCard: I authorize the following amount on the card: \$ \_\_\_\_\_

Card # \_\_\_\_\_

Expiration Date \_\_\_\_/\_\_\_\_/\_\_\_\_

Security Code \_\_\_\_\_

Name on credit card \_\_\_\_\_

Credit card mailing address with zip code \_\_\_\_\_

Authorized Signature \_\_\_\_\_

### Questions?

Contact Lisa at 801-446-8229 or  
[Lisa@utahurbanforest.org](mailto:Lisa@utahurbanforest.org)

## Application Information

By joining the Utah Chapter, you authorize the Utah Chapter to make your contact information available to the ISA so they can share information with you about educational seminars and other relevant events.

Name \_\_\_\_\_ Date \_\_\_\_\_

Company \_\_\_\_\_

Address \_\_\_\_\_

City \_\_\_\_\_ State \_\_\_\_\_ Zip \_\_\_\_\_ Phone \_\_\_\_\_

Email address \_\_\_\_\_

### Please indicate type of annual membership:

- Individual – \$55
- Lifetime – \$500
- Affiliate – check box for correct fee; submit name, phone & email for each member
  - 1-5 members – \$135
  - 6-10 members – \$185
  - 11-15 members – \$235
  - 16+ members – \$335
- Student – free
- Corporate – \$1,000

### Affiliate Members:

Name \_\_\_\_\_ Phone \_\_\_\_\_ Email \_\_\_\_\_


Name \_\_\_\_\_ Phone \_\_\_\_\_ Email \_\_\_\_\_

Name \_\_\_\_\_ Phone \_\_\_\_\_ Email \_\_\_\_\_


Name \_\_\_\_\_ Phone \_\_\_\_\_ Email \_\_\_\_\_

Name \_\_\_\_\_ Phone \_\_\_\_\_ Email \_\_\_\_\_



 (801) 446-8229

 P.O. BOX 95663 South Jordan, UT 84095

 [www.utahurbanforest.org](http://www.utahurbanforest.org)

 [lisa@utahurbanforest.org](mailto:lisa@utahurbanforest.org)

ISA - UTAH CHAPTER • UTAH COMMUNITY FOREST COUNCIL



MEMBER LOGIN

- ABOUT
- NEWS & EVENTS
- AMAZING TREES
- CERTIFIED ARBORISTS
- MEMBERSHIP
- RESOURCES
- CONTACT

# Advocating for Proper Management and Care of Utah's Community Forests

